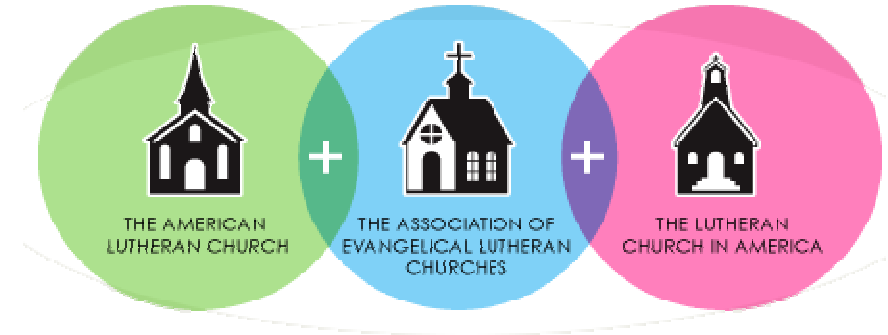


Marin Lutheran Church Historical Organization Overview

Marin Lutheran Church (MLC) was founded as a member of the Evangelical Lutheran Church (ELC). In 1960, it became part of the American Lutheran Church (ALC). When the ALC, the Association of Evangelical Lutheran Churches, and the Lutheran Church in America merged in 1988, MLC became part of the newly formed Evangelical Lutheran Church in America (ELCA). MLC has had three constitutions (1948, 1983, 1993) and our bylaws, created in 1983, were amended in 1992 and 2002.



Organizational Structure, 1948-1983

Officers

- President (or Pastor)
- Vice President (added in the 1950's)
- Treasurer
- Secretary
- Stewardship Secretary

Boards

- Board of Deacons
- Board of Trustees
- Board of Parish Education
- Stewardship Committee (added in 1950's or 1960's)

Congregational Council

- Members - Pastor, Officers, Board of Deacons, Board of Trustees, Secretary, Treasurer, Stewardship Secretary, President of each organization in the congregation and the Sunday School Superintendent
- Purpose - Served in an advisory capacity to the congregation, with the power to make recommendations for the good of the church

Organizational Structure, 1983 to Present

Officers

- President
- Vice President
- Treasurer
- Secretary
- Stewardship Secretary

Boards

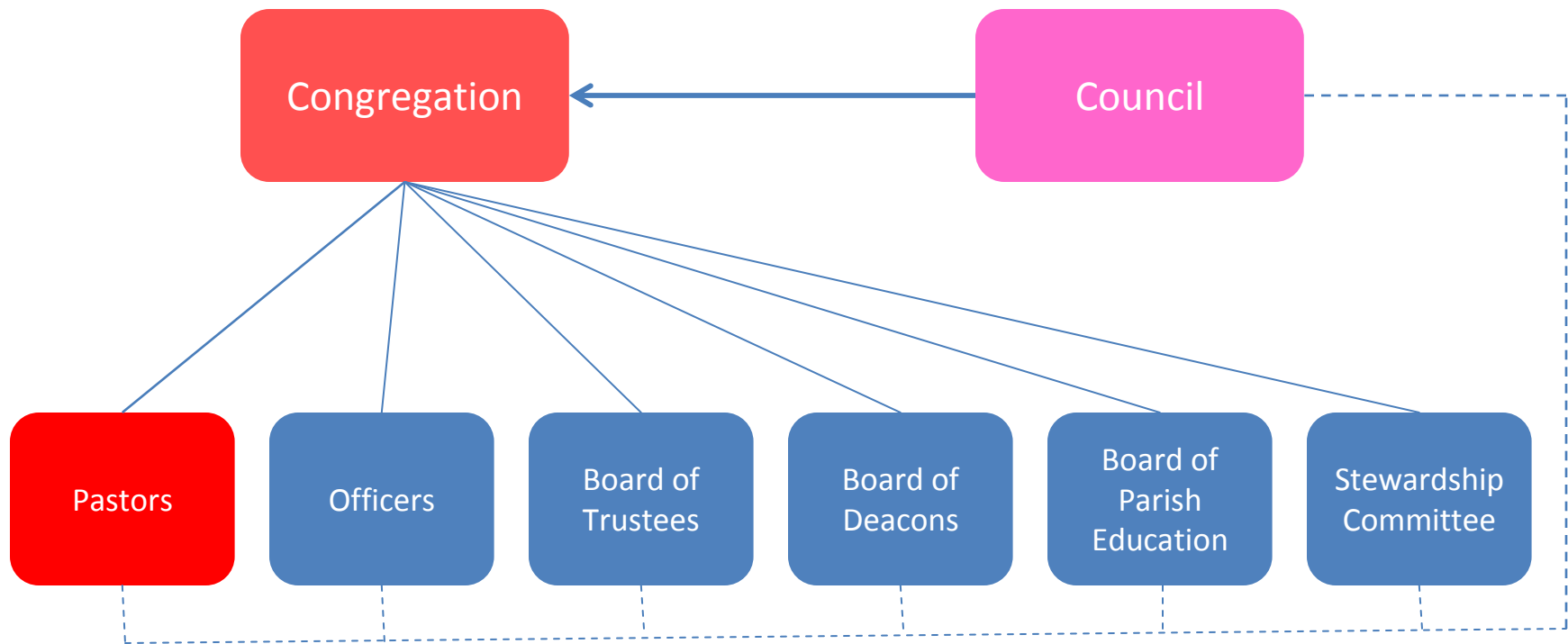
- Former Board of Deacons became
 - Board of Fellowship, Activities, and Publicity
 - Board of Worship and Music
 - Board of Mutual Ministry
 - Board of Social Concerns
 - Board of Evangelism
- Former Board of Trustees became
 - Board of Finance and Administration
 - Board of Church Properties
 - Board of Stewardship
- Board of Parish Education and Youth Ministry
- Marin Lutheran Children's Center (added in 2002)

Congregational Council

- Members – Pastor(s), Officers, Chair of each organization and board in the congregation
- Purpose – Serves as the governing body of the congregation between meetings of the congregation, conducts regular meetings, secure necessary staff (other than pastor(s)) and fix/review salaries, fill vacancies on Council, choose delegates, and provide property use guidelines. Any and all new programs or policy changes must be brought to the Council by the Boards before implementation.

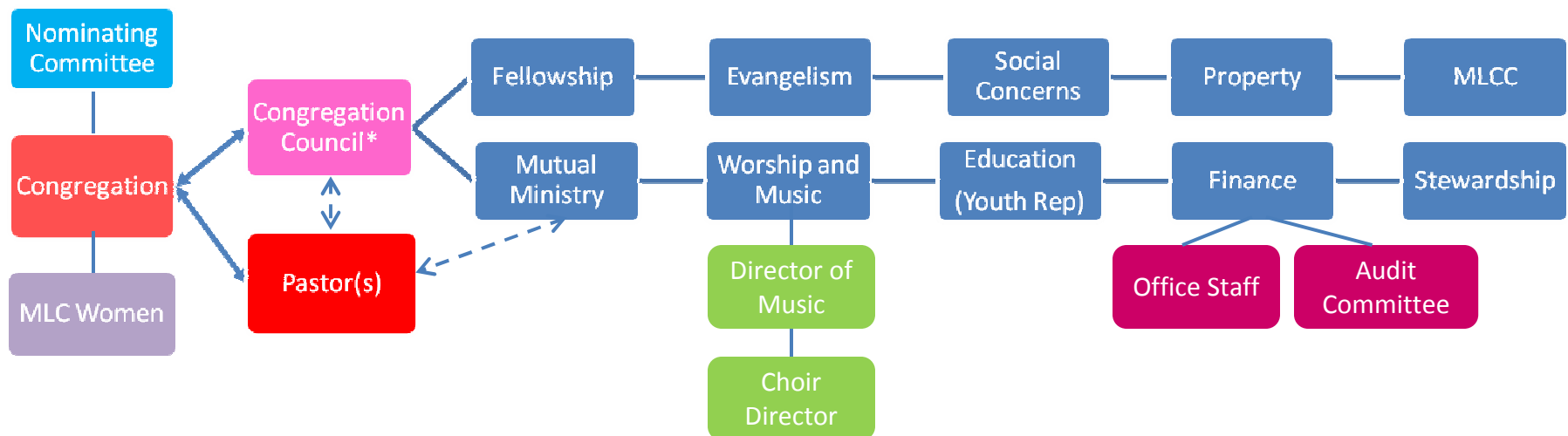


MLC Organization, 1948-1982





MLC Organization, 1983 to Present



*Members: Officers and Organization/Board Chairs